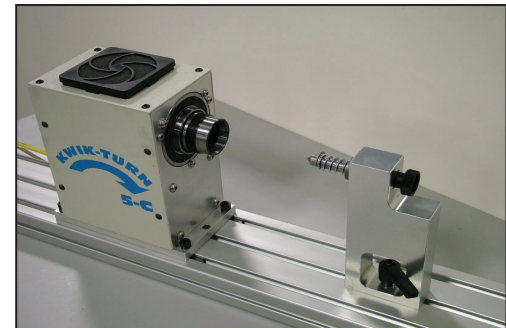
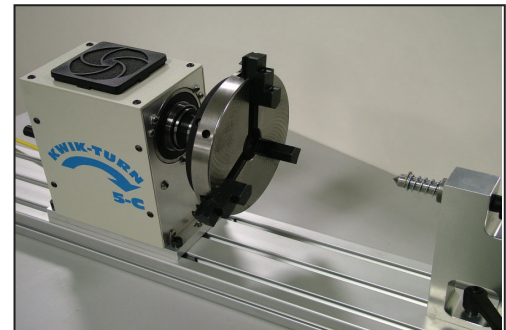
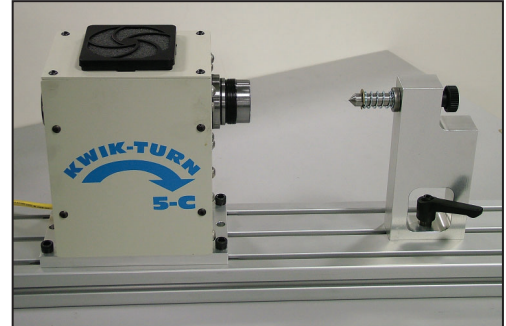


KT-5C Kwik Turn

Rotary & Indexing Attachment

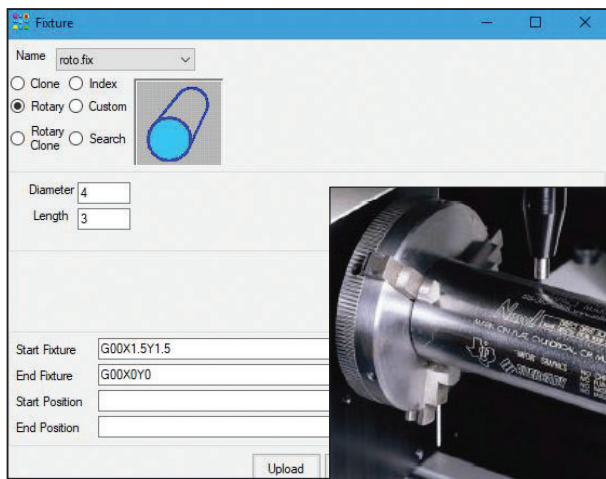


The KwikTurn heavy duty rotary attachment adds another axis used to mark round parts or multi-sided parts. All of the software features of the Kwikmark System (serializing, date coding, graphics, etc) are retained. Includes: Headstock, Tailstock & Base.

Features

- Headstock & tailstock are also infinitely adjustable along the rail length
- The 3 jaw chuck is removable exposing a 5-C collet spindle
- The precision ground 5-C spindle accepts standard lathe collets
- Large brushless motor for greater size and weight capacity
- Mounting rail is adjustable along the machine base, to suite virtually any marking geometry
- Quickly mounts to the base plate or T-Slot table for fast changeover
- Spring loaded tailstock with knob
- Functions as an indexer or cylindrical fixture
- Dual oversized 45mm ball bearings

One Fixture - Two Modes of Operation

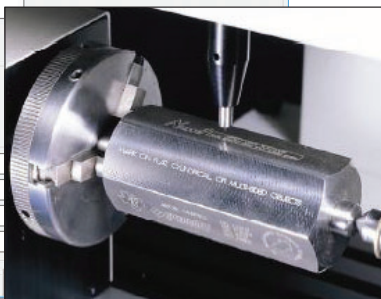
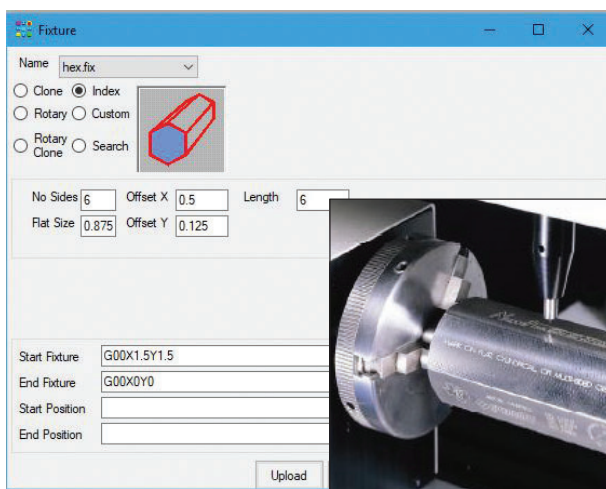


Rotary Fixture Mode

For marking around cylindrical parts by turning them during the marking cycle.

Just enter the diameter and the rotary fixture will "wrap" any text, graphics, etc in perfect proportion around your part.

May be used to mark round parts with files that were created for flat parts as well. Commands may be entered to execute before and after the cycle.

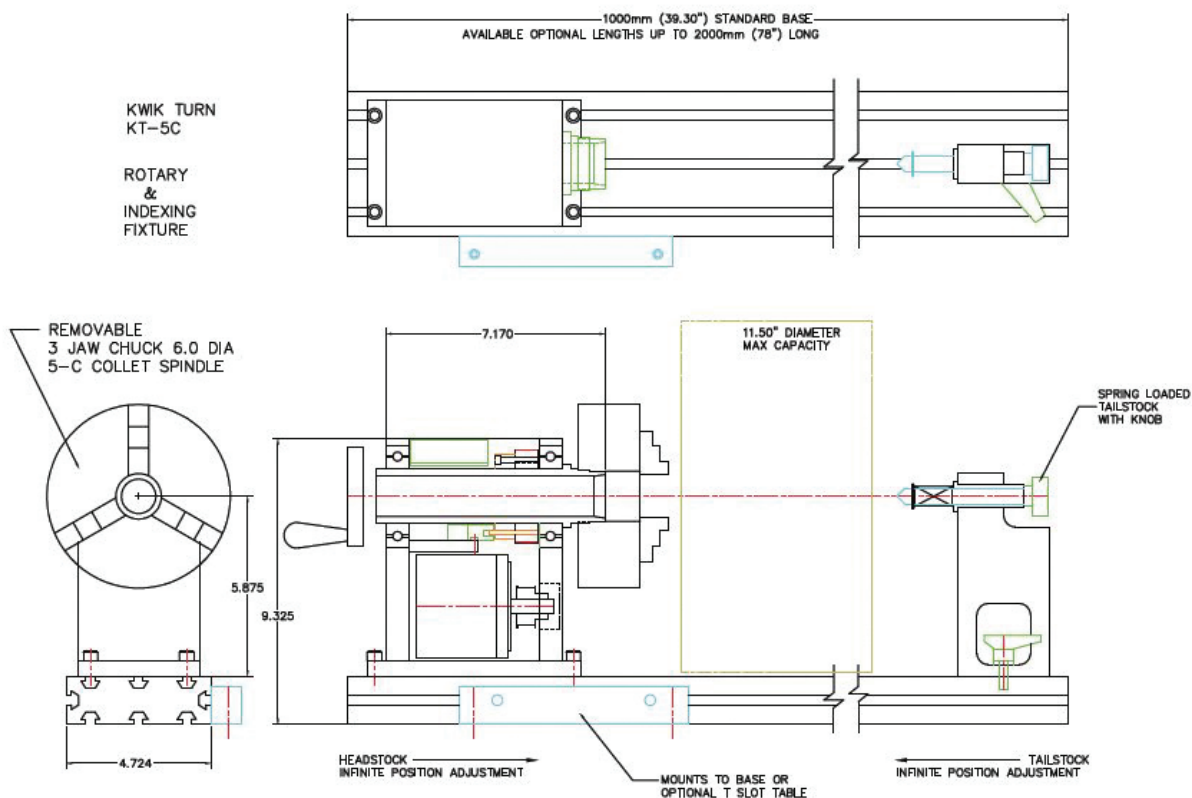


Index Fixture Mode

For marking flats on multi-sided objects by indexing the part.

Just enter the number of sides and the size. Each line in the marking file may be set to automatically mark on any flat of the part

Any number of sides may be used. Commands may be entered to execute before and after the cycle.



KT-5C
R: 190206