



815 363 8268

**Kwik Mark Inc**

[www.kwikmark.com](http://www.kwikmark.com)

## **Kwikmark Applications 1**



**KM with 10 Station Indexer**  
Programmable # of stops to suit almost any application. Controlled by system.



**KM with Pneumatic Kwik Turn**  
Automatic rotary axis with a pneumatic tailstock to clamp parts. No tools req'd.



**Tag Master 64**  
Name Plate Feeder ideal for high volume production



**Available Sine (Angle) Mount**  
Adjustable angle sub base adds versatility to the Kwik Turn head.



**Programmable Z Axis & 12" X Stroke**  
Entire column is programmable for multi-level marking.



**KM with dispenser valve**  
Ideal for automating that tedious and messy manual dispensing application.



**Kwik Turn Rotary Attachment**  
One component operates as a cylindrical fixture and an indexing head.



**KM with Port-A-Stand Adaptor**  
Mounts to the standard KM head for portable On-The-Go marking requirements.



**Two Position Dial Indexer**  
Streamlines the operator load / unload task with a removable dial & automatic operation.



815 363 8268

**Kwik Mark Inc**

[www.kwikmark.com](http://www.kwikmark.com)

## **Kwikmark Applications 2**



**Kwik Dex Programmable Indexer**  
Programmable # of stops to suit almost any application. Controlled by system.



**2 Position Indexer**  
Affordable automated 180 degree index with locking fixture nests



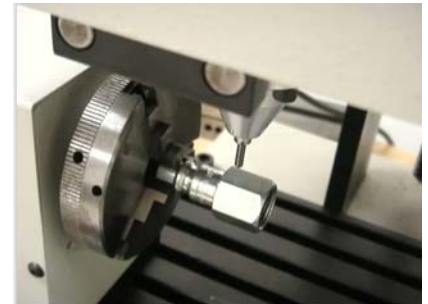
**Cylinder lock / key Clamp Fixture**  
Combines marking matched sets keys and locks



**Mini Vise**  
Tool steel construction with full support. Ideal for name tags and small parts.



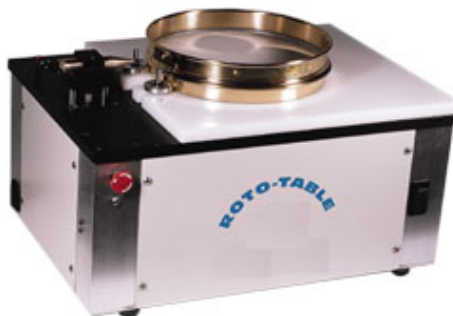
**Hi speed Cylinder Marker**  
Unique high speed head marks round, angular and spherical surfaces all @ once.



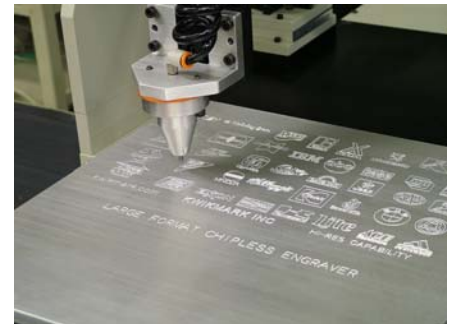
**KwikTurn Versatility**  
Functions as an indexing head for multiple sided parts. Limitless number of sides.



**Nametag Nest**  
Quick slide in nest streamlines manually loading the system. Adjustable for size.



**Ring / Flange Marking System**  
Custom solution for larger parts that do not lend themselves to the traditional equipment.



**Large Format Marker**  
Standard 12" x 15" or 24" x 15" travel area. Available in up to 4ft x 8ft travel area.